

DRAWING NUMBER
53/167

A Part Of Boca West, Planned Unit Development

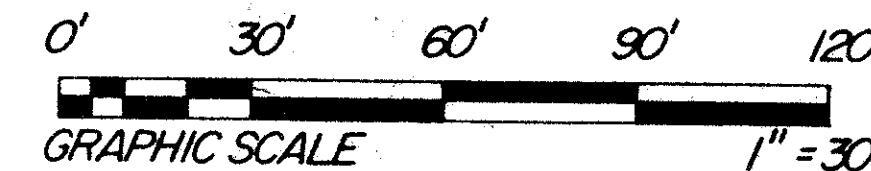
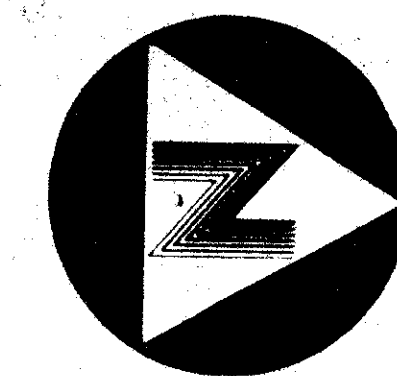
Charter Cay At Boca West

Lying In Section 9, Township 47 South, Range 42 East

Palm Beach County, Florida

February A.D., 1986

Sheet 2 Of 2



167

State of Florida)
County of Palm Beach)

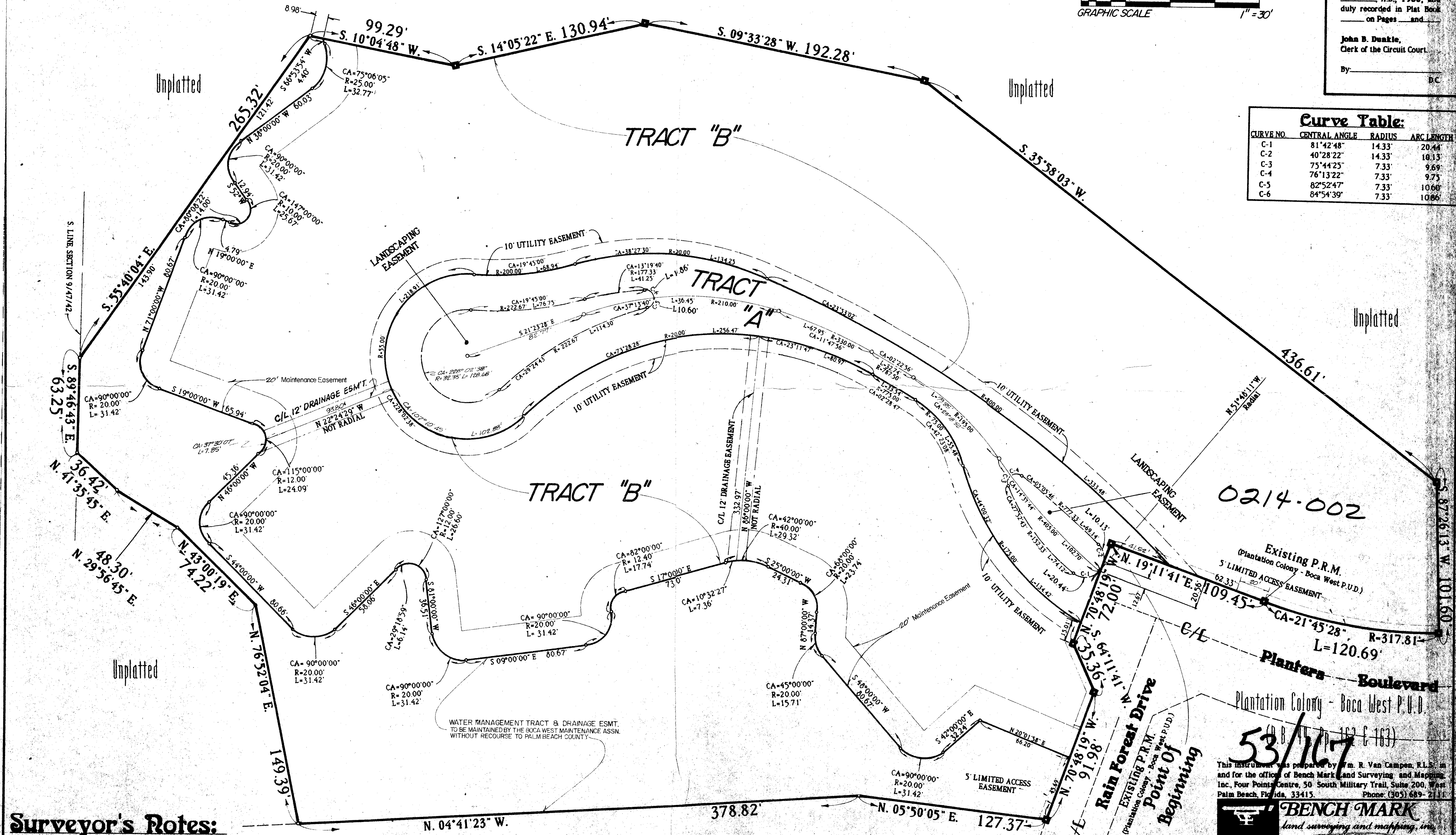
This Plat was filed for record
at _____ this _____ day of
_____, A.D., 1986, and
duly recorded in Plat Book
_____ on Pages _____ and _____

John B. Dunkle,
Clerk of the Circuit Court.

By: _____ D.C.

Curve Table:

CURVE NO.	CENTRAL ANGLE	RADIUS	ARC LENGTH
C-1	81°42'48"	14.33'	20.44'
C-2	40°28'22"	14.33'	10.13'
C-3	75°44'25"	7.33'	9.69'
C-4	76°13'22"	7.33'	9.75'
C-5	82°52'47"	7.33'	10.60'
C-6	84°54'39"	7.33'	10.66'



Surveyor's Notes:

1. Bearings shown hereon are based on those shown on Plantation Colony Boca West P.U.D., according to the Plat thereof, as recorded in Plat Book 44, pages 162 and 163, Public Records, Palm Beach County, Florida.
2. Denotes a Permanent Reference Monument (P.R.M.)
3. Lot lines and/or boundary lines which intersect a curve are radial to said curve unless otherwise noted.

Plantation Colony - Boca West P.U.D.
(P.B. 44, Pp. 162 & 163)

BENCH MARK
land surveying and mapping, inc.

Record Plat
Charter Cay At Boca West

DATE 2/5/86
SCALE 1"=30'

DRAWING NUMBER
PLAN HOLD CORPORATION - IRVINE, CALIFORNIA
REGISTERED BY NUMBER 07348

DRAWING NUMBER
PLAN HOLD CORPORATION - IRVINE, CALIFORNIA
REGISTERED BY NUMBER 07348

DRAWING NUMBER
PLAN HOLD CORPORATION - IRVINE, CALIFORNIA
REGISTERED BY NUMBER 07348